

822500 N

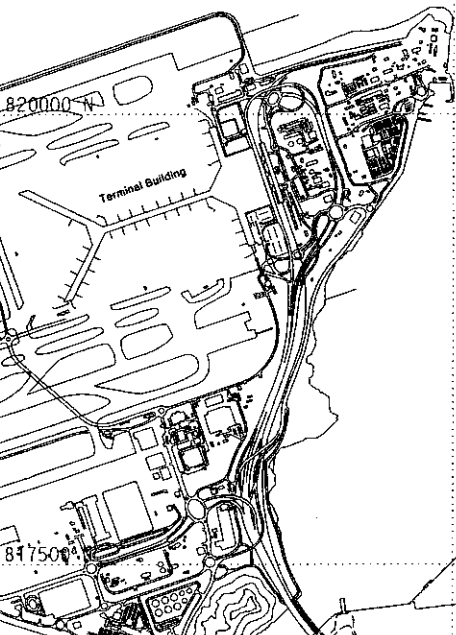


Tai Mo To

EAST BROTHER

The Brothers

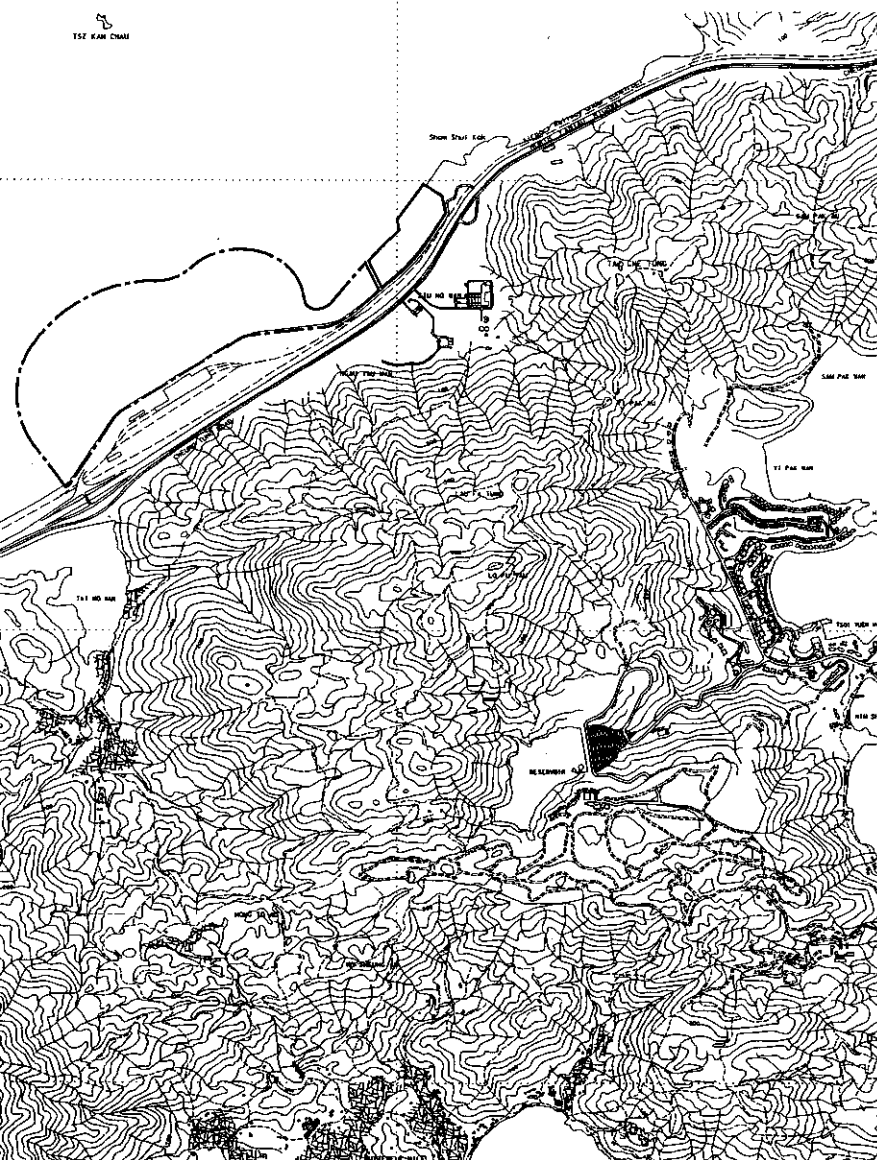
TSE KAM CHAM



817500

TUNG CHUNG BAY

TUNG CHUNG



Rev	Description	By	Date
Consultant			
ARUP		奧雅納工程顧問 Ove Arup & Partners Hong Kong Limited	
Project No.			
AGREEMENT NO. CE 23/2004 (CE) LANTAU LOGISTICS PARK DEVELOPMENT FEASIBILITY STUDY			
Drawing No.			
LOCATION PLAN OF LANTAU LOGISTICS PARK & POSSIBLE RECLAMATION EXTENT			
Drawing No.		Rev.	
24332/MS/001		—	
Drawn	Date	Checked	Approved
AL	02/05	—	—
Scale		Sheet	
1 : 15000		—	

COPYRIGHT RESERVED



土木工程拓展署  
Civil Engineering and  
Development Department

Printed by : AUSER  
 Date : 05/05/2006  
 Drawing No. : 24332/MS/001  
 Project No. : CE 23/2004 (CE)  
 Drawing No. : 24332/MS/001